

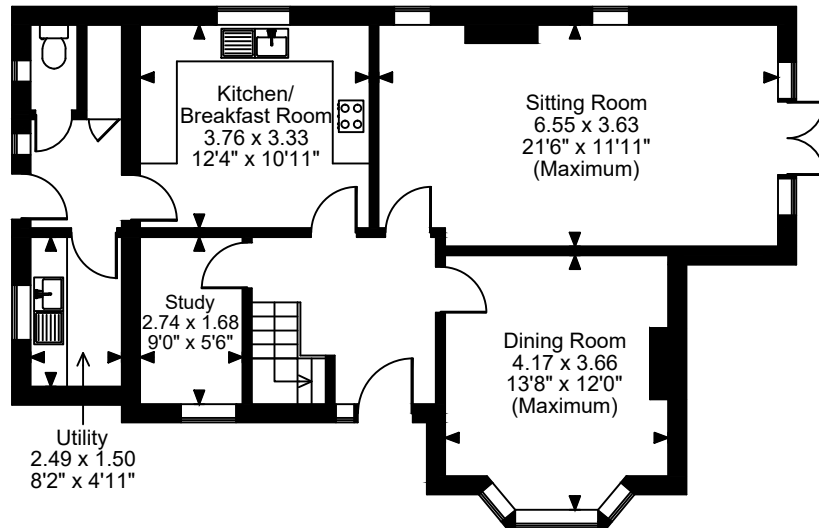
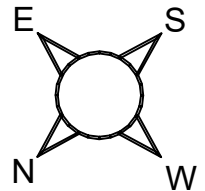
# North Farm, Wallingford Road, Didcot

Approximate Gross Internal Area

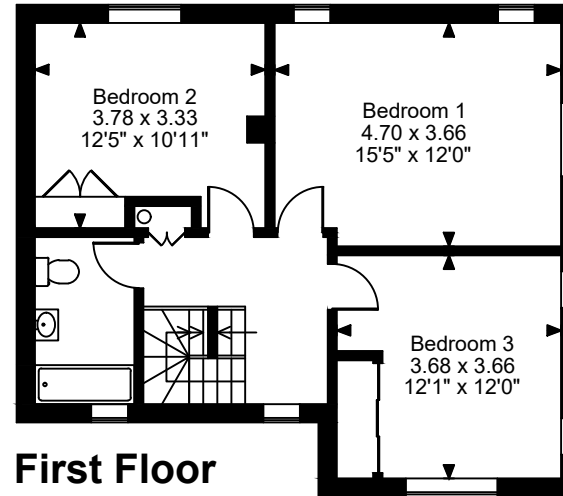
Main House = 1645 Sq Ft/152 Sq M

Outbuilding = 460 Sq Ft/43 Sq M

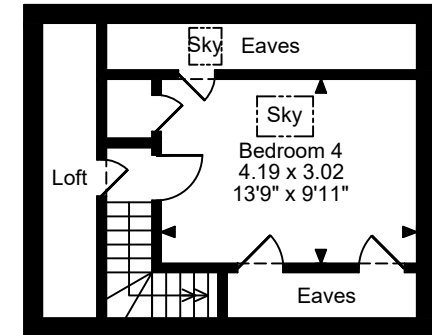
(Including Garage area)



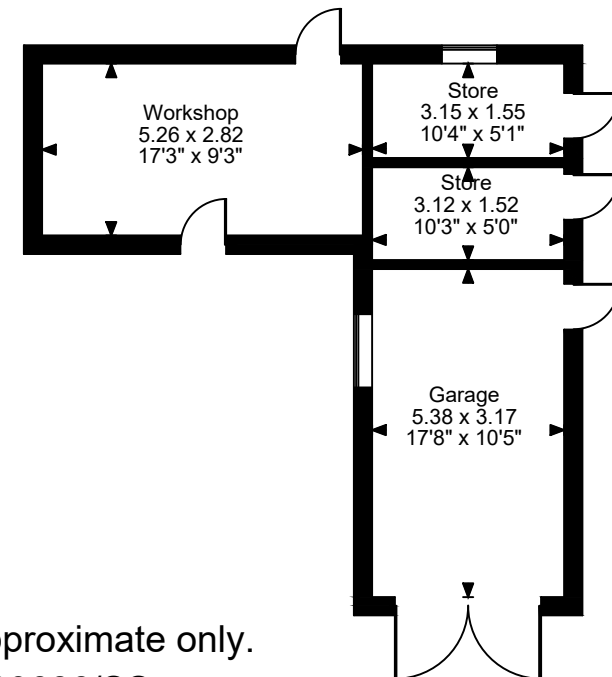
**Ground Floor**



**First Floor**



**Second Floor**



**FOR ILLUSTRATIVE PURPOSES ONLY - NOT TO SCALE**

The position & size of doors, windows, appliances and other features are approximate only.

© ehouse. Unauthorised reproduction prohibited. Drawing ref. dig/8599686/SS